



Simulation 1 _ Straight

Model: DCB48 - 320
Quantity: 6
Optic: 13°
Direction: 0°
Color: 2700K

Simulation 2 - Spread

Model: DCB48 - 320
Quantity: 6
Optic: 13°
Direction: -45° x 45°
Color: 2700K

Simulation 3 - Straight

Model: DCB48 - 320
Quantity: 6
Optic: 13°
Direction: 0°
Color: 6500K

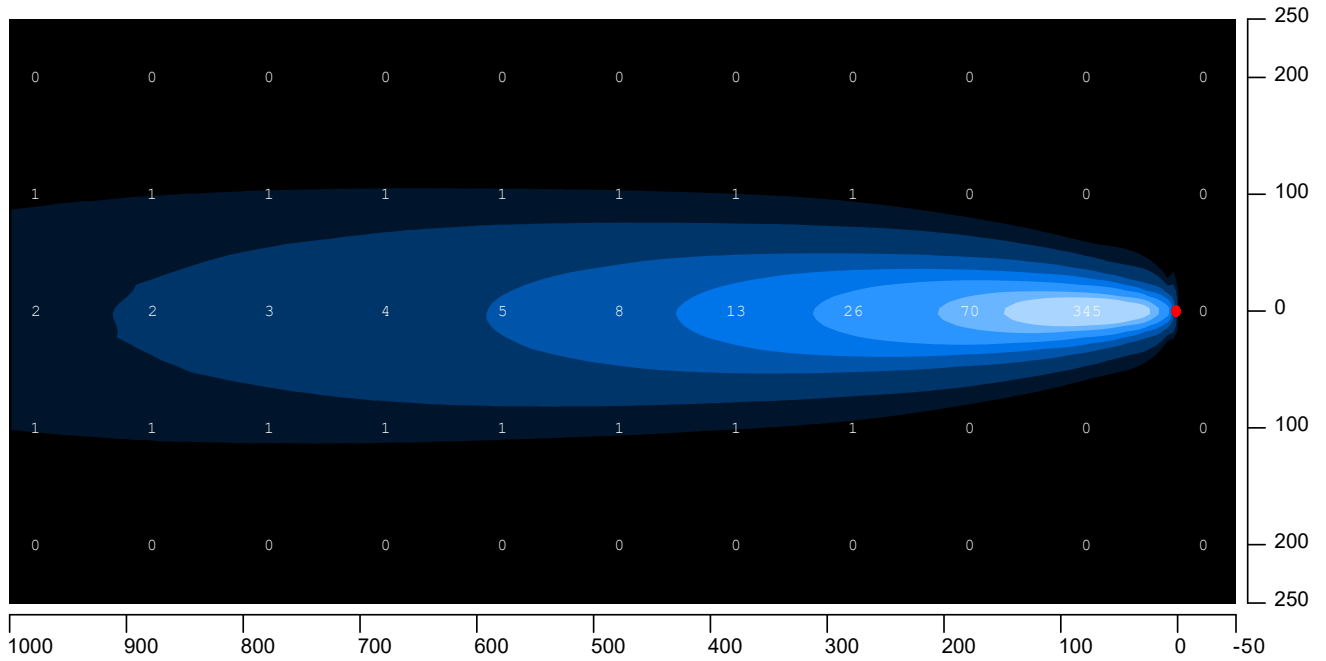
Simulation 4 - Spread

Model: DCB48 - 320
Quantity: 6
Optic: 13°
Direction: -45° x 45°
Color: 6500K

MLT 1920-LED SINGLE AXLE

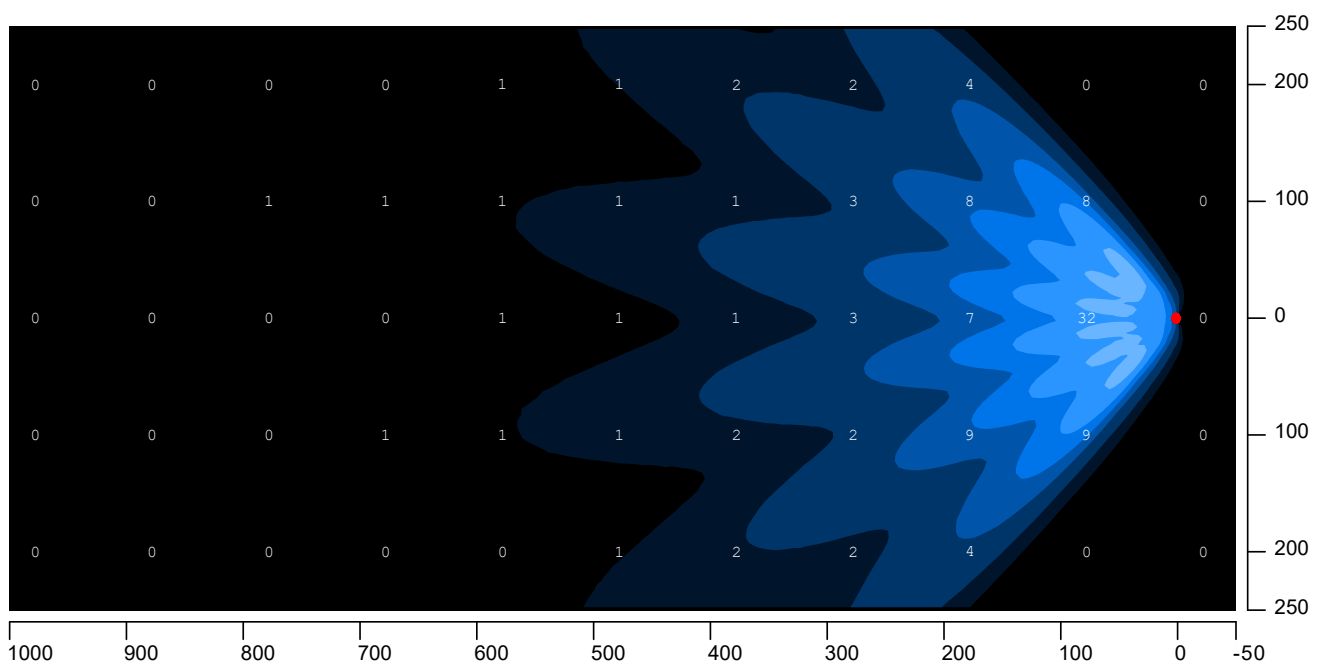
Simulation 1 _ Staight _ 2700k

Model: DCB48-320 | 2700K | Quantity: 6x | Lens: 13° | Direction: 0° | Angle: 5°



Simulation 2 _ Spread _ 2700k

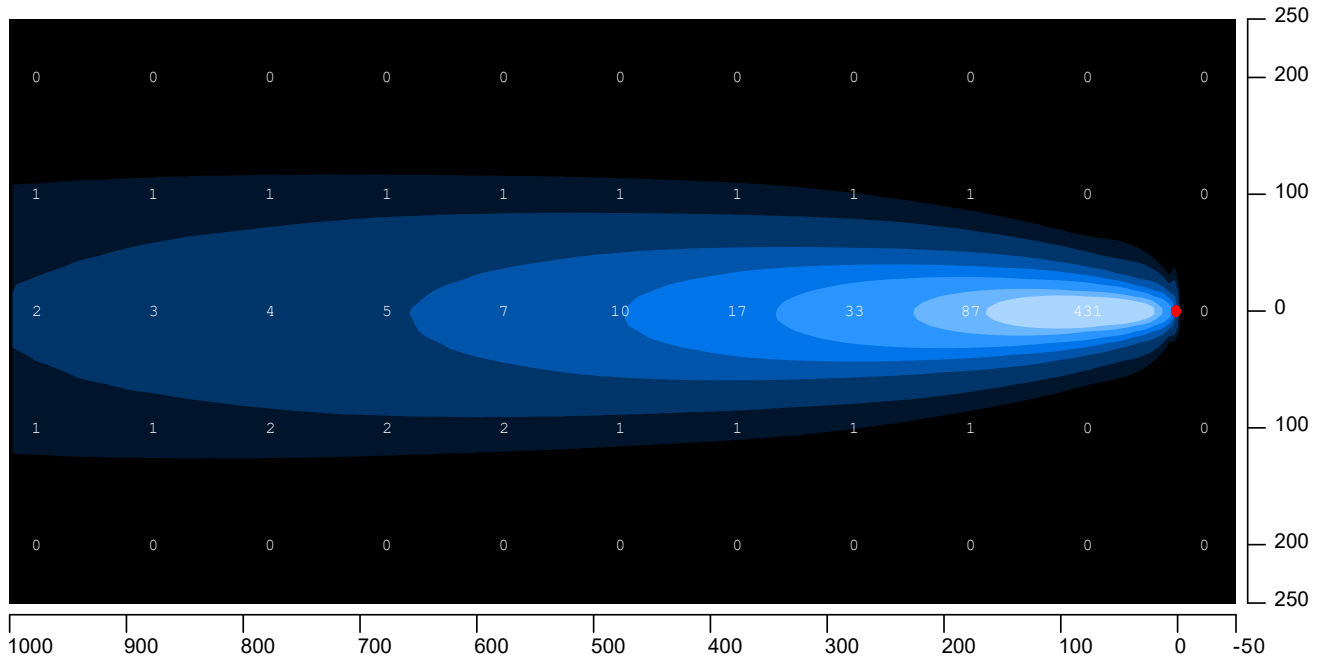
Model: DCB48-320 | 2700K | Quantity: 6x | Lens: 13° | Direction: 45° x -45° | Angle: 5°



MLT 1920-LED SINGLE AXLE

Simulation 3 _ Staight _ 6500k

Model: DCB48-320 | 6500K | Quantity: 6x | Lens: 13° | Direction: 0° | Angle: 5°



Simulation 4 _ Spread _ 6500k

Model: DCB48-320 | 6500K | Quantity: 6x | Lens: 13° | Direction: 45° x -45° | Angle: 5°

